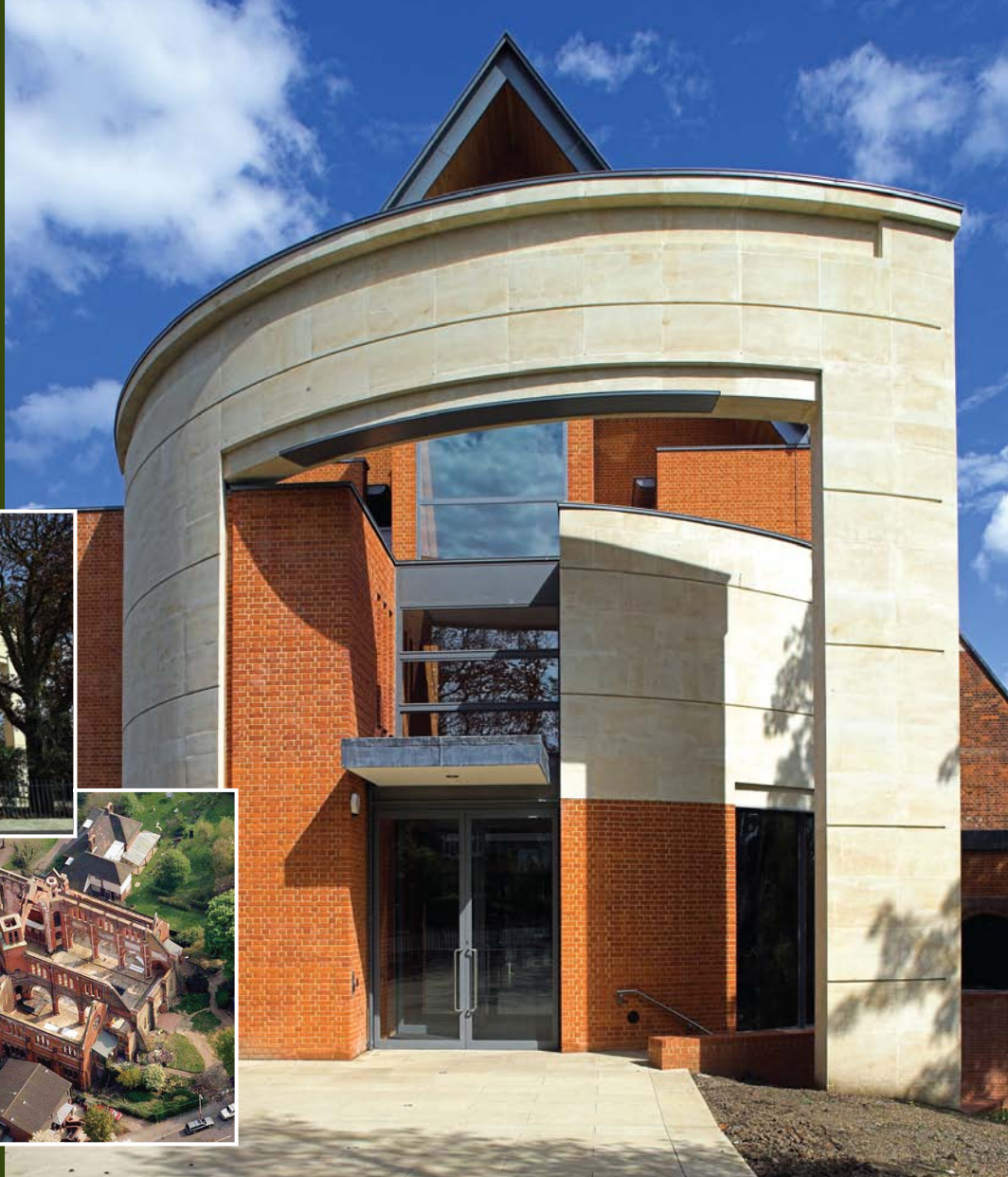
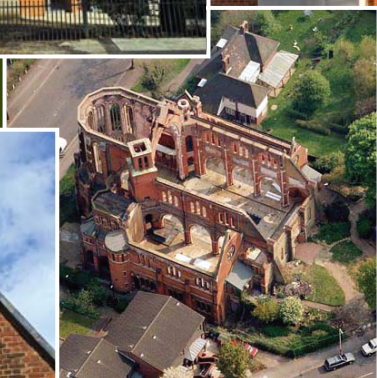




By appointment to
Her Majesty The Queen
Building Façade Restoration
and Conservation



All Saints Church Dulwich

In June 2000 a disastrous fire caused by an electrical fault tore through All Saints Church and led to the destruction of the roof structure, windows and the internal stonework.

The church was built in the 1890's but only three of the original designed seven bays of the nave could be afforded whilst the east end of the church was considered to be a masterpiece of beauty and grandeur.

PAYE Stonework were appointed to rebuild and repair the stonework and brick facades including the Chancel arch which had suffered through the rapid thermal expansion and contraction caused from the fire brigade water used to control the fire.

The stone works also included a new contemporary entrance to the west end of the church to replace the temporary 1891 façade when the original funds ran out.

- **Cleaning**
- **Repair**
- **Conservation**
- **Extension**
- **Adaption**
- **Surveys**
- **Budgets**
- **Technical advice**



PAYE

www.payestone.co.uk

Stationmasters House Mottingham Station Approach London SE9 4EL
Telephone 020 8857 9111 Fax 020 8857 9222
enquiries@payestone.co.uk