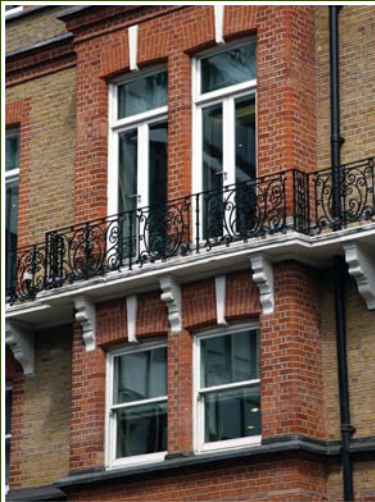




By appointment to
Her Majesty The Queen
Building Façade Restoration
and Conservation



Cadogan Mansions

Cadogan's Chelsea Estate has its origins in the historic Manor of Chelsea, which dates from Anglo-Saxon times, but it was the antiquarian, collector, physician and scientist, Sir Hans Sloane who created modern Chelsea.

Sloane bought the Manor of Chelsea in 1712 as a country retreat (his home was in Bloomsbury) and, potentially, as a showcase for his spectacular collection that was to lead to the foundation of The British Museum. He began property development as early as 1717 - and parts of that early scheme are still visible at 1 to 18 Cheyne Walk.

The ambitious redevelopment of Cadogan Mansions enabled a collection of premises to be rebuilt as one building behind the retained façade which maintains the appearance of a row of Victorian buildings.

PAYE's ability to replicate the original facades to extend the height of several building facades enabled the transformation to be completed successfully. The seamless addition of new floors, gables and chimneys is difficult to distinguish from the repaired retained facades beneath.

- **Cleaning**
- **Repair**
- **Conservation**
- **Extension**
- **Adaption**
- **Surveys**
- **Budgets**
- **Technical advice**



PAYE

www.payestone.co.uk

Stationmasters House **Mottingham Station Approach London SE9 4EL**
Telephone 020 8857 9111 Fax 020 8857 9222
enquiries@payestone.co.uk