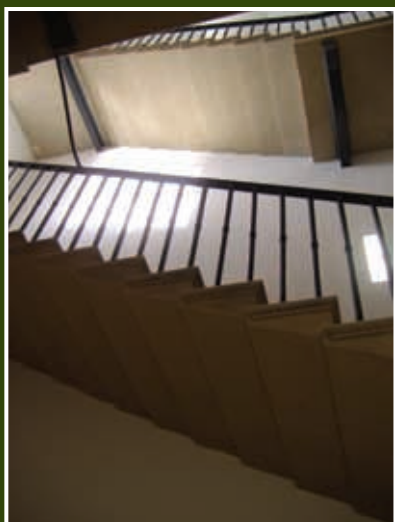
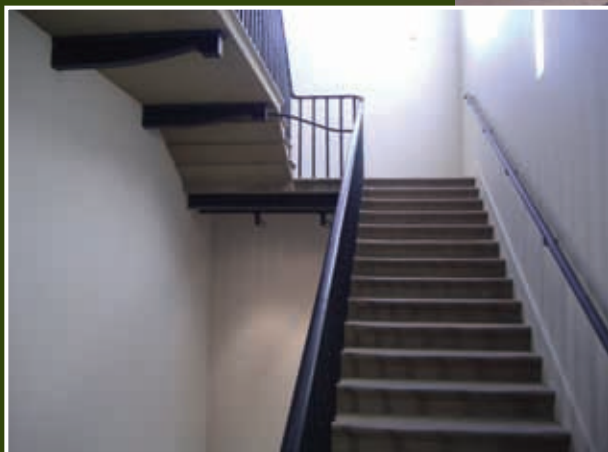




By appointment to  
Her Majesty The Queen  
Building Façade Restoration  
and Conservation



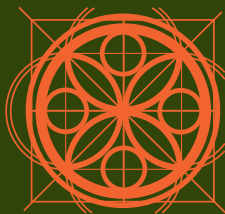
## Kings College

The Kings Building designed by Robert Smirke, Architect of the British Museum, originally opened in 1831. George Gilbert Scott added the famous College Chapel in 1860.

PAYE Stonework completed a conservation-lead restoration of the cantilever staircases and corridor floors which included seamlessly repairing the Belgium Black limestone and White Carrara chequerboard ninth floor and removing 175 years of grime, dirt and staining to the sandstone stairs and corridors.

The refurbishment has respected the best of the historic design whilst restoring the building for contemporary use.

- **Cleaning**
- **Repair**
- **Conservation**
- **Extension**
- **Adaption**
- **Surveys**
- **Budgets**
- **Technical advice**



# PAYE

[www.payestone.co.uk](http://www.payestone.co.uk)

Stationmasters House Mottingham Station Approach London SE9 4EL  
Telephone 020 8857 9111 Fax 020 8857 9222  
[enquiries@payestone.co.uk](mailto:enquiries@payestone.co.uk)